

SMF / PAPI Photometric Instrument for PAPI lights alignment

DATABASE

The system database has the capacity to store all the data relevant to measurements performed during the instrument lifetime.

The database stores information of Countries, Airports, PAPI brands and models, measurement results, graphics, pictures and statistical data.

REPORTING

The system provides a full reporting capability of PAPI parameters as:

- Transition Elevation Angle
- Transition Divergence
- Transition Tilting
- Beam Aperture
- Beam Status
- Isocandela Diagram
- Chromaticity diagram

MAINTENANCE

The system allows the maintenance team to adjust in real time the PAPI units elevation angle and tilting following the instructions given by the system software for a final perfect aiming of the PAPI to the nominal requested values.

TRAINING

Customers will be provided with a complete training course covering all the operating, reporting and maintenance issues to reach the complete control of the instrument and maintenance procedures.



The SMF/PAPI is the sole instrument in the world for the in-field assessment of PAPI lights with an overall accuracy better than 1 arc-minute. SMF/PAPI is able to perform a complete 4 units PAPI wing bar measurement within 45 minutes work, giving the operator the easiest and most comfortable experience in in-field photometric testing.

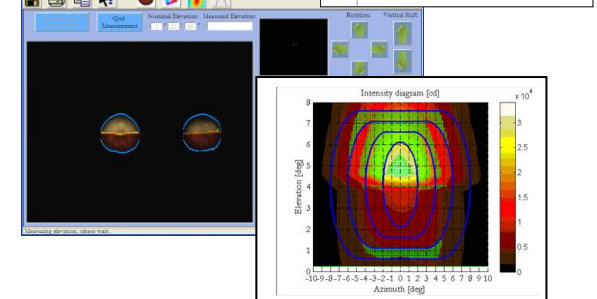
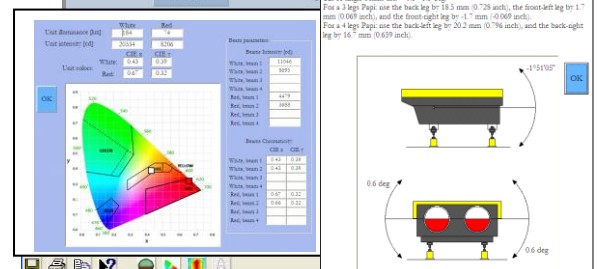
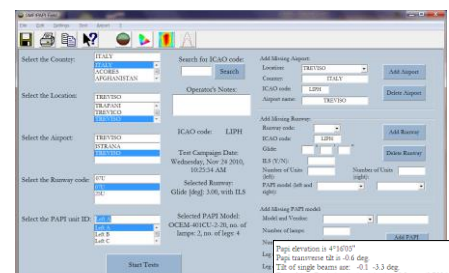
A built-in system database allows the maintenance team to check the PAPI units transition elevation against their nominal setting values, getting in real time the feedbacks to properly set the PAPI unit under test.

The high accuracy of SMF/PAPI instrument allows to perfectly synchronize left and right PAPI bars and to harmonize the PAPI visual approach slope with the glide path of the ILS.

The instrument performs a full beams diagnostic of PAPI unit including beam focusing, light bulb and filter positioning, transition elevation, divergence and widening, beam chromaticity, intensity and aperture.

The instrument has been tested at ETL-Intertek laboratories in USA and certified by several CAAs for PAPI lights assessment in lieu of traditional Flight Inspection.

- PAPI units transition elevation measurements with 1' accuracy
- Night and Day operations
- LED PAPI units supported
- Light Intensity and Colour Measurement according to ICAO Annex 14 recommendations
- Complete Beam Analysis
- GPS positioning to certify the instrument position and timing
- Quick reporting for real-time maintenance
- Automatic PDF complete reporting
- WiFi Remote Control via Notebook PC
- Light LiPo battery pack
- Control of obstacle limitation surfaces (Option)



AUTO DIAGNOSTIC

SMF/PAPI features an automatic self diagnostic subsystem to check the instrument status

DOCUMENTATION

The standard supply includes System Manual, Operating Manual, Test Data Report and Calibration certificates

TECHNICAL SUPPORT

Argos technical support assists customers along the whole system lifetime

EFFICIENCY

Fast deployment in field
Rapid runway clearance
Quick feedback for real-time maintenance of PAPI units
Always available for instant checking of transition elevation

TURNKEY SOLUTIONS

The instrument comes with a complete set of accessories for a prompt usage in field

More information about Argos products and services at:
www.argosingegneria.com

Via Tiburtina 1166
00156 Roma - Italy
Tel. + 39 06 41 22 10 1
Fax +39 06 4111144
argos@argosingegneria.com

Characteristics

SMF/PAPI instrument is composed of:

- Measuring Head
- Mounting Tripod
- Embedded PC
- Tablet PC
- LiPo Battery Pack
- GPS Antenna
- Cables Set
- Rugged Case
- Tripod Case



Specifications

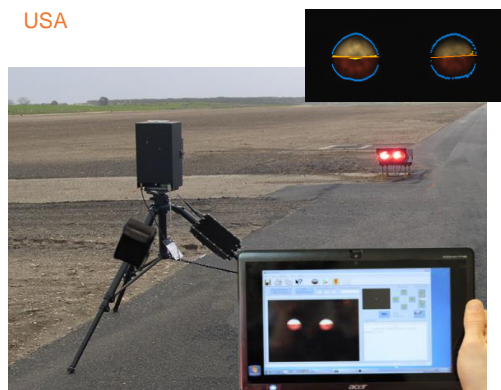
Parameter	Accuracy	Item	Dimensions	Weight
• Elevation angle of each beam in the PAPI unit	Better than 1'	SMF/PAPI Head including cover	H 345 mm	6,2 Kg
• Average elevation angle of the unit	Better than 1'		L 188 mm	
• Average elevation angle (Glide Path) of the PAPI bar (A,B,C,D units)	Better than 1'		W 240 mm	
• Horizontality of colour transition of each beam	0,2°	SMF/PAPI Head case	H 230 mm	3,8 Kg
• Horizontality of colour transition of the PAPI unit	0,2°		L 380 mm	
• Colour transition aperture of the PAPI unit	1'	Tripod including bag	W 490 mm	3 Kg
• Aperture angle of the PAPI unit	1°		H 950 mm	
• Output intensity (CD) of the PAPI unit	10 %	Power Pack Lipo – 10000mAh	W 250 mm	2,0 Kg
• Chromaticity of the PAPI unit according to CIE	0.03 (on x and y)		H 360 mm	
		PC including bag and cables	L 330 mm	0,5 Kg
			W 140 mm	
Environmental				
		Operating	°C	-20/+42
		Not Operating	°C	-30/+60
Electrical				
		Power Supply	V	12DC
		Consumption	Ah	1,5

Certifications

AENA (Spanish CAA), Bureau Veritas (Third Part Lab), DGAC (Mexican CAA), ENAC (Italian CAA), ETL Intertek Laboratories, HCAA (Greek CAA), Canada

References

Angola, Bangladesh, Canada, China, Colombia, Greece, Indonesia, Italy, Korea, Nigeria, Russian Federation, South Africa, Spain, Sudan, Turkey, United Kingdom, USA



- LIGHT BATTERY PACK
- EMBEDDED PC
- TABLET PC for WiFi REMOTE CONTROL