

SMF / Fix AGL Portable Photometric Instrument

COMPLETE DATABASE

The system database has the capacity to store all the life measurements for the configured airports.

Database incorporates all the information of lights systems and subsystems, light fixture characteristics, light absolute and relative positioning, light measurement results.

COMPLETE REPORTING

- Photometric Diagram
- Maintenance Report
- Alignment report
- Repair Report
- Course Report

COMPLETE DOCUMENTATION

The system includes System Manual, Operating Manual, Test data report and Calibration Certificates

TRAINING COURSE

The provided training course will cover all the installing, operating, reporting and maintenance issues allowing the customer to reach the complete control of the instrument



SMF/Fix is a stop-and-go real-time photometric measurement system for AGL equipment, designed, developed and manufactured by ARGOS in order to perform the measurement of the airfield lights along runways and taxiways without the requirement of a vehicle.

SMF/Fix is easy to use as the operator is step-by-step assisted by the system software running on the on-board Tablet PC.

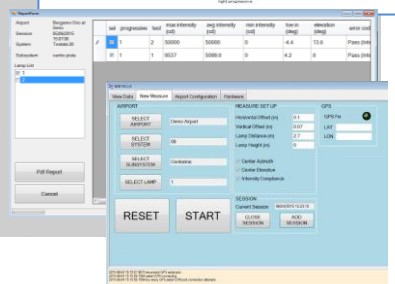
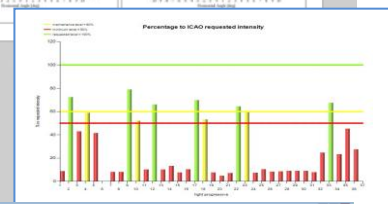
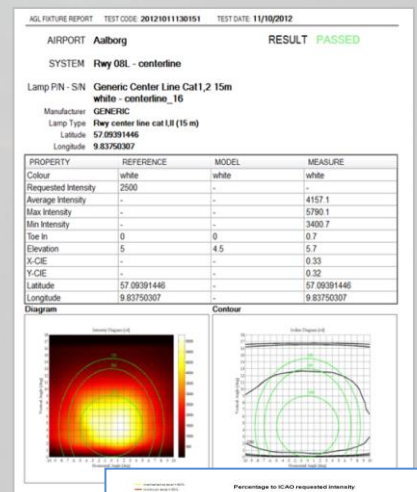
The regular use of SMF/Fix allows the Customer to:

- quickly identify the fixtures requiring maintenance for cleaning, repair or replacement
- maintain compliance of AGLS to ICAO Annex 14 recommendations
- reduce operational costs of AGLS, providing useful information to improve the maintenance routine

SMF/Fix is composed of an array of photometers and colorimeters capable of measuring with a single click the photometric parameters and the orientation of runway and taxiway lights.

SMF/Fix can also test the photometric diagram and parameters of PAPI (Precision Approach Path Indicator) lights.

- Light Measurement according to ICAO Annex 14 reference grid points
- Maximum, Average and Minimum beam intensity measurement
- Elevation and Azimuth angles measurement
- Light Colour measurement according to CIE 1931
- GPS SBAS based lights positioning
- Full automatic PDF reporting including lights position



SELF DIAGNOSTIC

The system holds automatic diagnostic routines to continuously check the instrument status

TECHNICAL SUPPORT

Argos technical support assists customers during the whole system lifetime.

REACHING ALL LIGHTS

Easy reaching all kind of lights wherever they are installed

TURNKEY SOLUTIONS

No Vehicle required
Automatic database filling procedure for light fixtures positioning

For further information on our products and services please see our website: www.argosingegneria.com

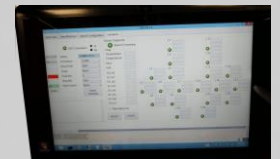
Via Tiburtina 1166
00156 Roma - Italy
Tel. + 39 06 41 22 10 1
Fax +39 06 4111144
www.argosingegneria.com

Characteristics

All SMF/Fix subsystems are powered by rechargeable batteries (battery charger included).

SMF/Fix System kit includes:

- Sensors Frame with carrying bag
- Mounting Trolley
- Rugged Tablet PC
- Rechargeable Power Pack for the instrument and the PC
- System Software License (measurement, database, processing, report generation)
- Connecting cables
- Manuals
- Test and calibration certificates
- Calibration tool (optional)



All electronics components are compliant with current legislation 2002/95/CE (RoHS: Restriction of Hazardous Substances Directive).

Specifications

Measured Parameter	Accuracy/Resolution
Photometric intensity and iso-candela diagrams	
Average, maximum, minimum intensity (cd)	<5 %
Vertical aiming angle (elevation, deg)	0.5°
Horizontal aiming angle (toe-in, deg)	0.5°
Ratio of max to min intensity	
Chromaticity x, y (CIE 1931)	0.03
GPS light position	2.5 m
Automated single-light reporting	
Automated lights sub-system reporting	
Measurement duration (1 light)	<1 min typ.
Measurement distance	2.7 m typ.
Working Temperature	-10°C +40°C
Storage Temperature	-20°C +80°C

